

?

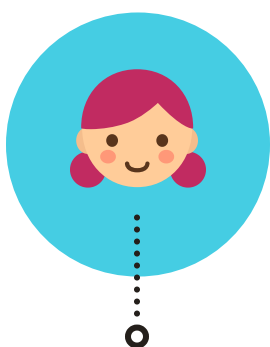
What Age Group Has the Highest Rate of Depression?

STATISTICS

There are dozens of studies that break down the rates of depression among various groups in the population. From age to gender to race, you can find statistical breakdowns outlining the impact of depression on all types of people.

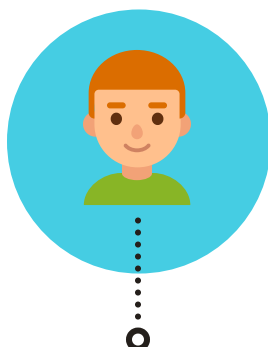


Highest Rate of Depression. Broken down by age group



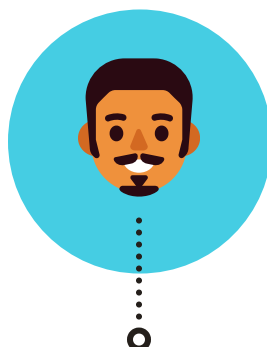
14,4%

Adolescents ages
12 to 17



13,8%

Young adults ages
18 to 25



8%

Adults ages 26 to
49



4,5%

Adults ages 50
and older